



*The Joe Amato*

**Scott Town Plaza**  
**1381 Columbia Blvd**  
Bloomsburg, Pennsylvania

**Available for Lease**  
**9800 SF**

**Nicole Kovalski**  
**Property & Leasing Manager**  
Nicole@joeamatoproperties.com  
**Office: 570-287-5343**



272 East End Centre • Wilkes-Barre, PA 18702 • T: 570.287.5343

Information is obtained from sources believed to be reliable; however, it is subject to errors, omissions, changes in price, terms, prior sale, or withdrawal without notice.

[www.joeamatoproperties.com](http://www.joeamatoproperties.com)





*The Joe Amato*

## Scott Town Plaza

The Scott Town Plaza is the latest addition to the Amato Properties family of shopping centers. This modest open-air plaza, located on Columbia Blvd in Bloomsburg, offers 76,634 square feet of retail, restaurant and office space. Operating in the Plaza are the national chains of Tractor Supply Co, Fastenal, Rent-A-Center and DollarTree. They are joined by the locally owned Japanese Hibachi Steakhouse Oliran and Cooper Electric. The convenient location of the Plaza, along heavily traveled Columbia Boulevard, inevitably ensures our client's success.

### Property Features

- Polished Concrete Floor
- 10' Ceiling Height
- 2 ADA compliant Restrooms
- 65' of Storefront
- Pylon Sign Space Available
- Small Warehousing Area
- New Electric 2021
- Ample Parking

**Nicole Kovalski**

**Property & Leasing Manager**

[nicole@joeamatoproperties.com](mailto:nicole@joeamatoproperties.com)

**Office: 570.287.5343**



272 East End Centre • Wilkes-Barre, PA 18702 • T: 570.287.5343

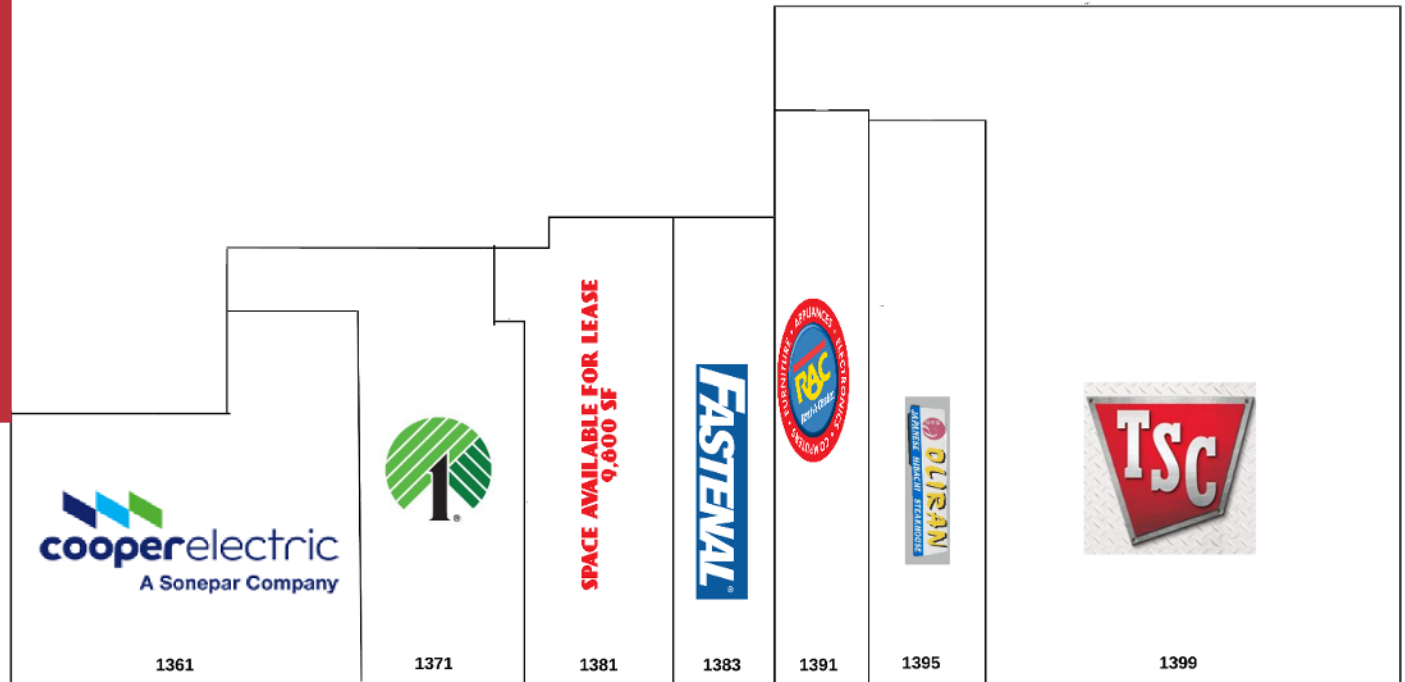
[www.joeamatoproperties.com](http://www.joeamatoproperties.com)

Information is obtained from sources believed to be reliable; however, it is subject to errors, omissions, changes in price, terms, prior sale, or withdrawal without notice.

*The Joe Amato*

# Scott Town Plaza

Unit	Tenant	SF
1361	Cooper Electric	9,050
1371	Dollar Tree	9,815
1381	AVAILABLE	9,800
1383	Fastenal	4,000
1391	RAC	5,430
1395	Oliran	6,000
1399	Tractor Supply	29,700



**Nicole Kovalski**

**Property & Leasing Manager**

[nicole@joeamatoproperties.com](mailto:nicole@joeamatoproperties.com)

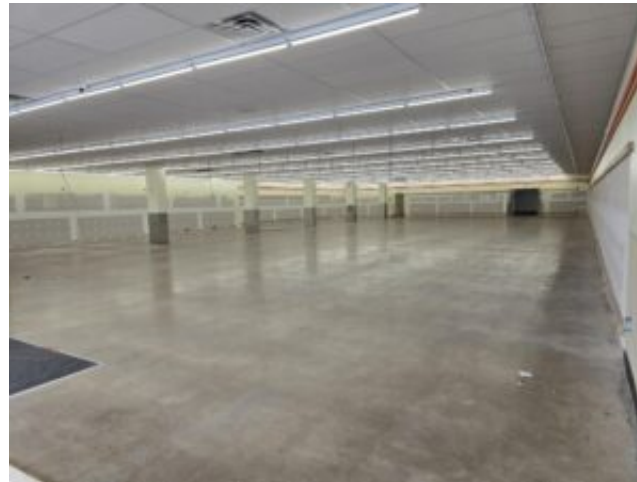
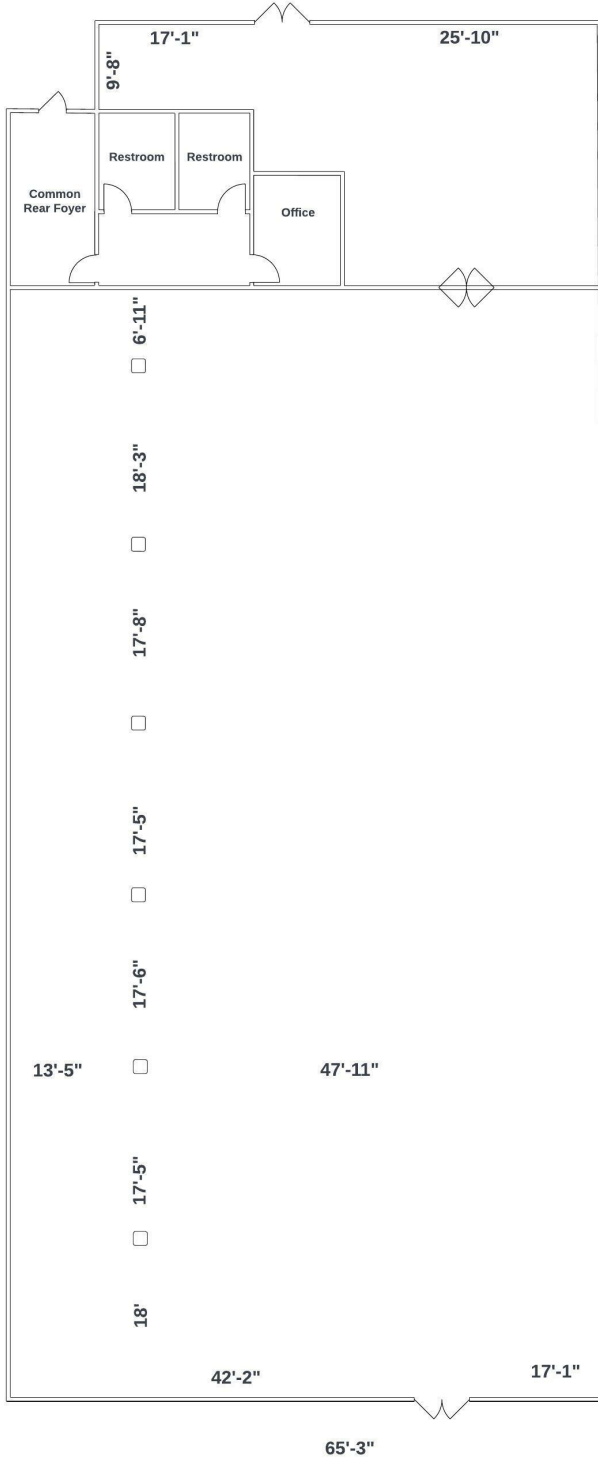
**Office: 570.287.5343**



272 East End Centre • Wilkes-Barre, PA 18702 • T: 570.287.5343

[www.joeamatoproperties.com](http://www.joeamatoproperties.com)

Information is obtained from sources believed to be reliable; however, it is subject to errors, omissions, changes in price, terms, prior sale, or withdrawal without notice.



**Nicole Kovalski**  
**Property & Leasing Manager**  
[nicole@joeamatoproperties.com](mailto:nicole@joeamatoproperties.com)  
**Office: 570.287.5343**



**9800 SF**

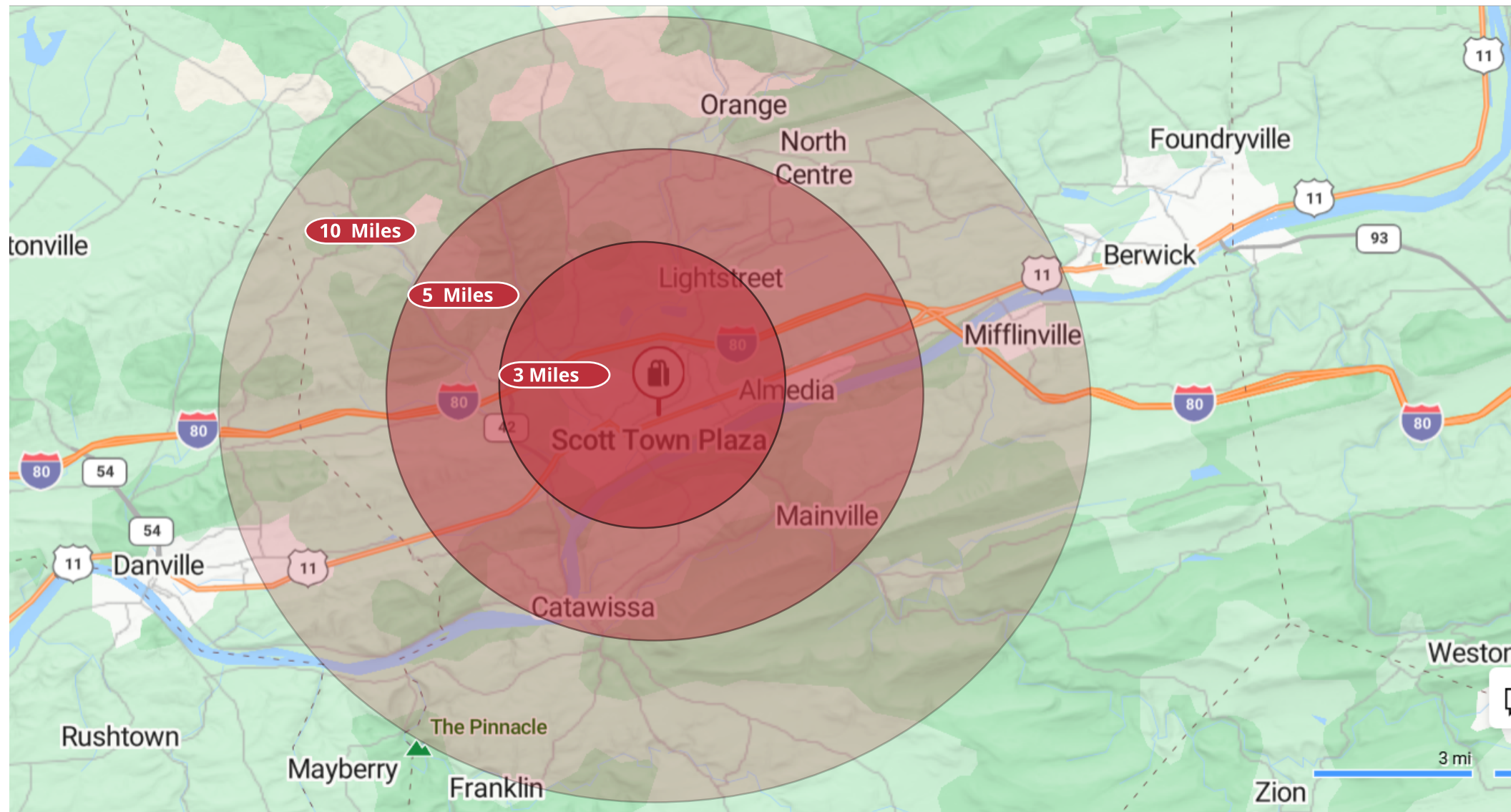


**272 East End Centre • Wilkes-Barre, PA 18702 • T: 570.287.5343**

[www.joeamatoproperties.com](http://www.joeamatoproperties.com)

Information is obtained from sources believed to be reliable; however, it is subject to errors, omissions, changes in price, terms, prior sale, or withdrawal without notice.





272 East End Centre • Wilkes-Barre, PA 18702 • T: 570.287.5343

[www.joeamatoproperties.com](http://www.joeamatoproperties.com)

Information is obtained from sources believed to be reliable; however, it is subject to errors, omissions, changes in price, terms, prior sale, or withdrawal without notice.



**Located along the busy retail corridor of Columbia Blvd.**



<b>RADIUS</b>	<b>3 miles</b>	<b>5 miles</b>	<b>10 miles</b>
<b>POPULATION</b>	<b>22,355</b>	<b>30,063</b>	<b>58,238</b>
<b>HOUSEHOLDS</b>	<b>8,153</b>	<b>11,041</b>	<b>23,138</b>
<b>MEDIAN INCOME</b>	<b>\$45,292</b>	<b>\$48,128</b>	<b>\$51,739</b>